

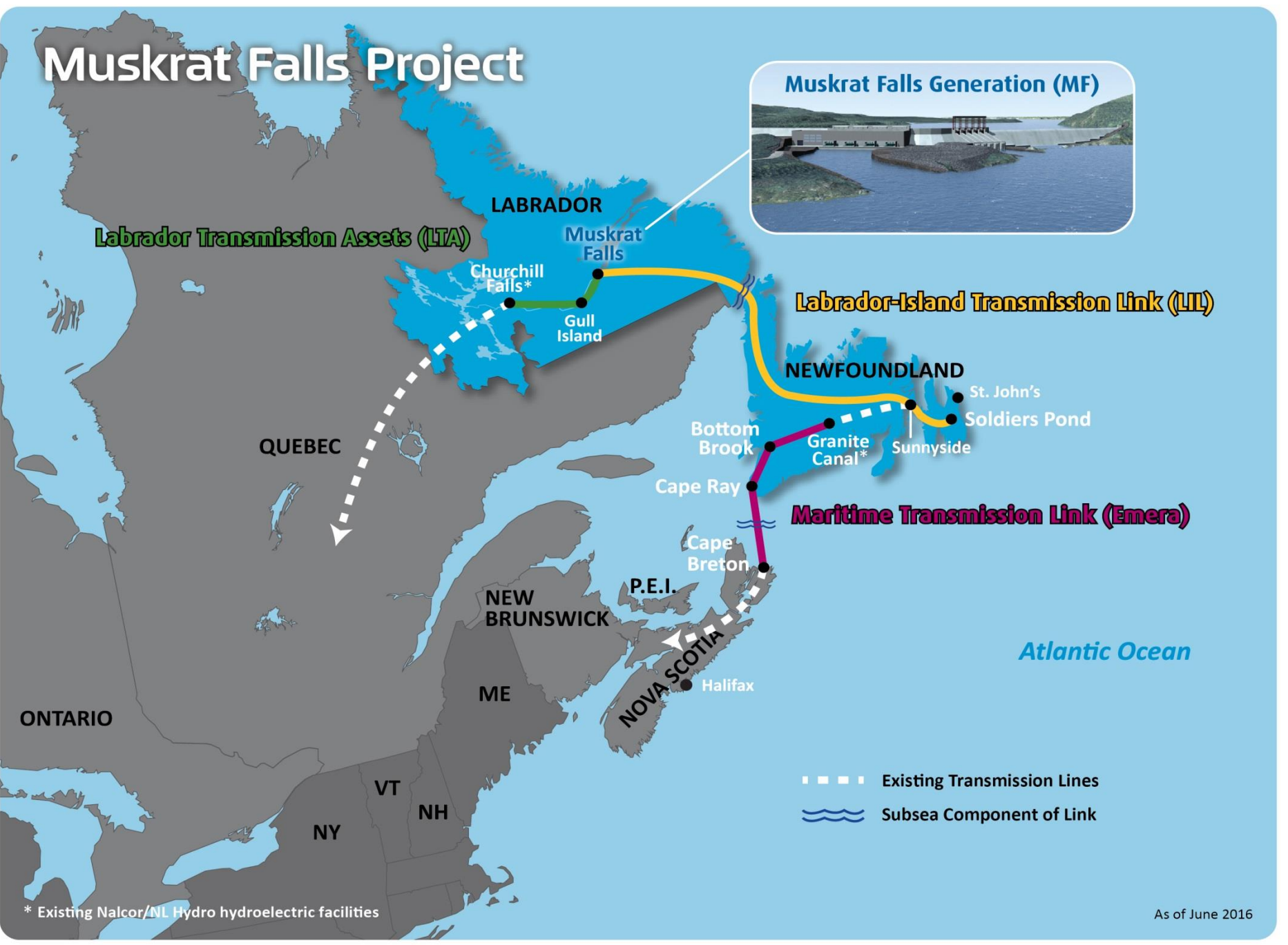
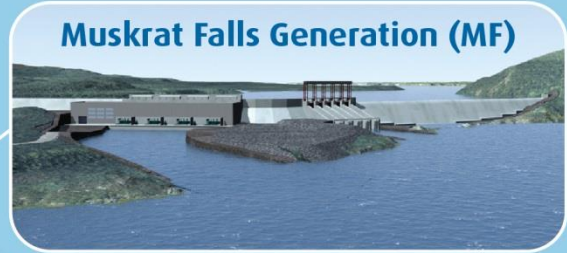
# Muskrat Falls Project Update

June 24, 2016

Boundless Energy



# Muskrat Falls Project



Labrador Transmission Assets (LTA)

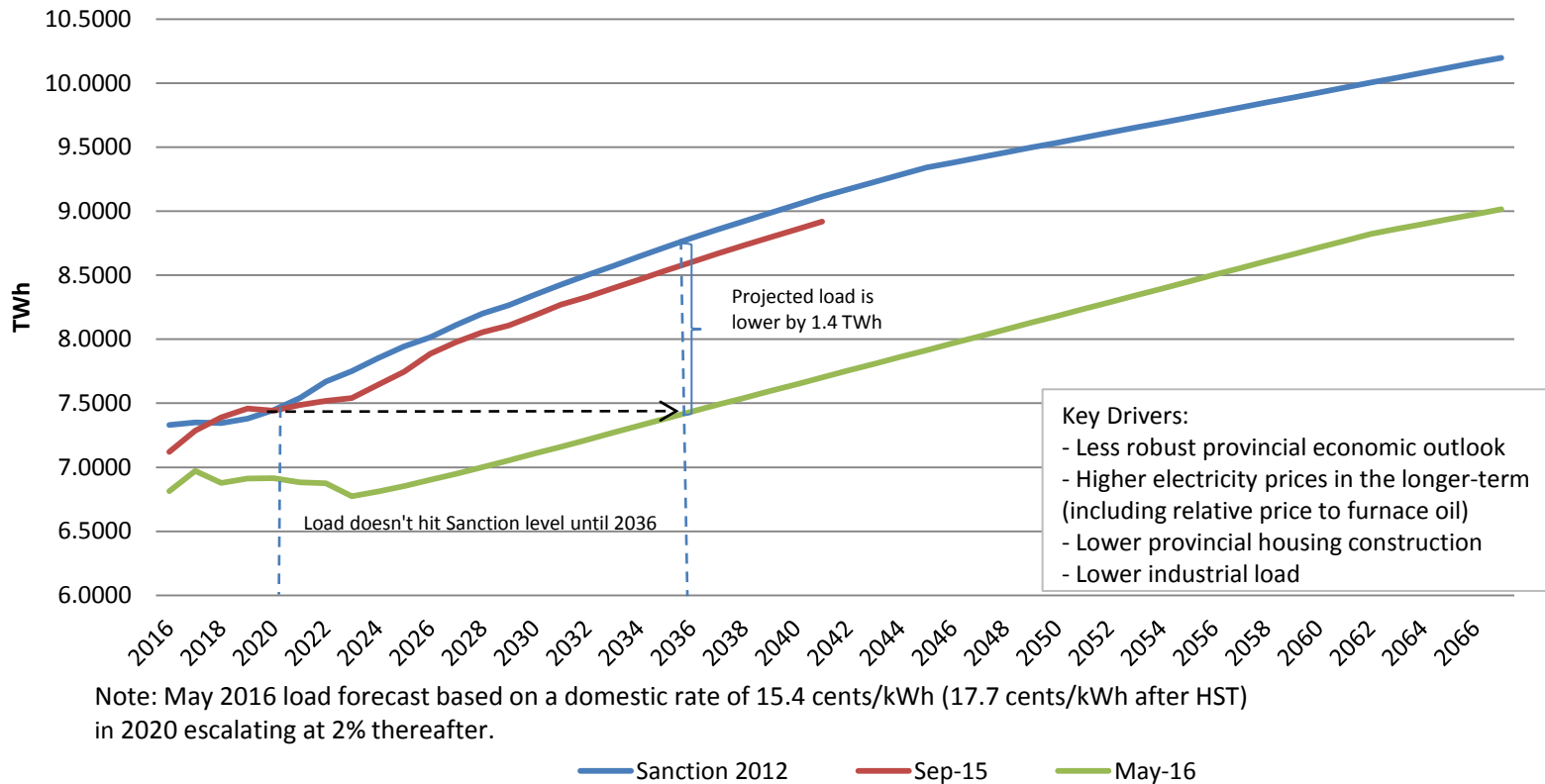
Labrador-Island Transmission Link (LIL)

Maritime Transmission Link (Emera)

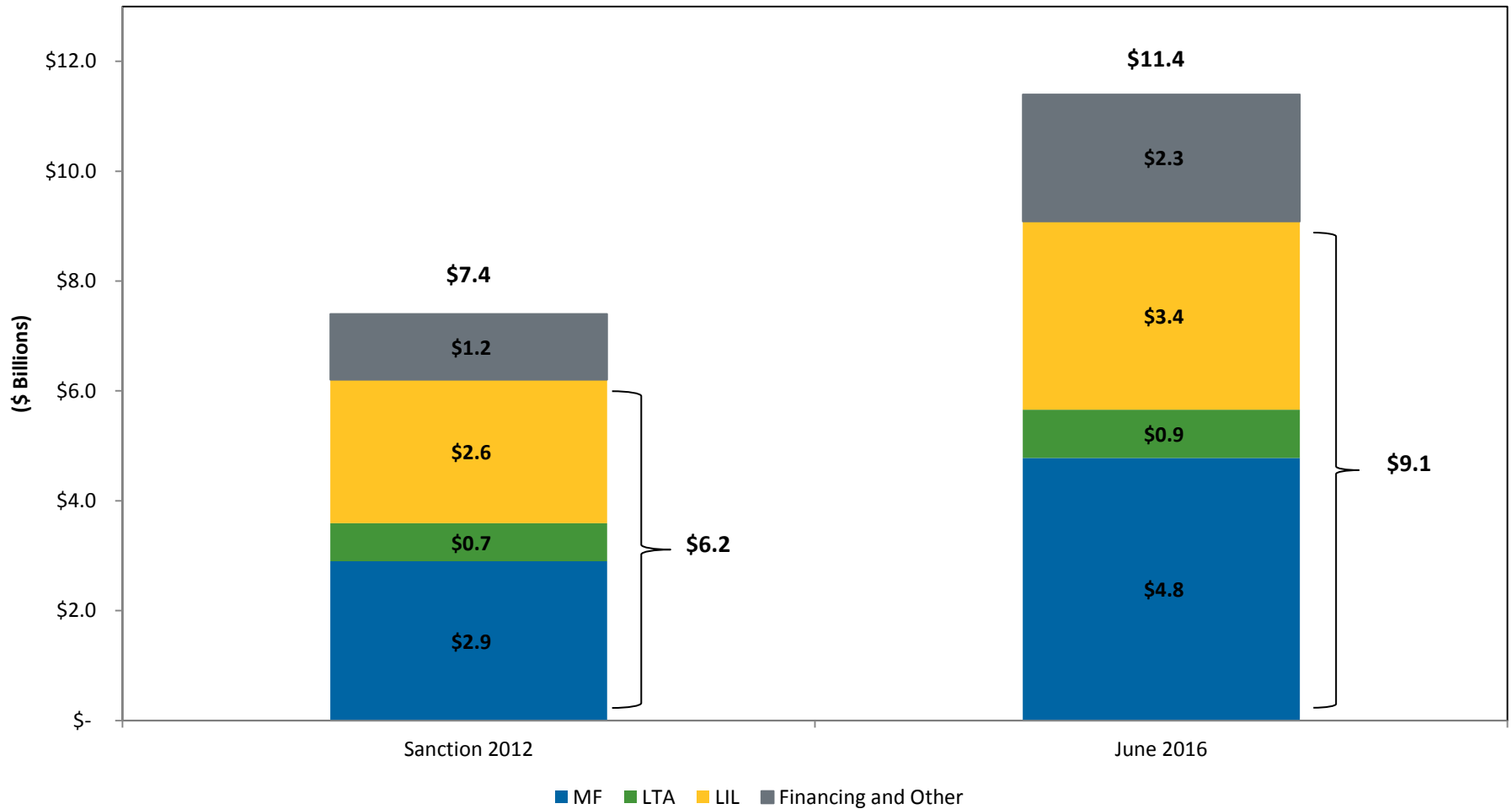
- Existing Transmission Lines
- Subsea Component of Link

\* Existing Nalcor/NL Hydro hydroelectric facilities

# NL Hydro Island Interconnected Sales



# Projected In-Service Cost



# Muskrat Falls Projected In-service Dates

From Sanction to June 2016

Project Component	Sanction	June 2016
Muskrat Falls Generation	First power: Q4 2017 Full power: Q2 2018	First power: Q3 2019 Full power: Q2 2020
Labrador-Island Link	Q2 2017	Q2 2018
Labrador Transmission Assets	Q2 2017	Q2 2018

# Provincial Equity Requirements for MF Project to 2020

