

Reservoir Survey

Performed by: Mohammad Ansari

Date: 01-Aug-2017

Weather: Rainy, 12 °C

Surveyed River Area: From Muskrat Falls Site to Gull Island Site

Comments

Most slopes are covered with trees and no sedimentation was observed in the river along the South bank. However, along the North bank few places with sedimentation could be observed. Few areas were found under slow erosion, as trees were falling along the edges. Ground water flow was also observed in steep slopes with little to no green covering.

South Bank – From 43 km to 95 km

Kilometer	Sedimentation/Shoals	Slopes/Sloughs/Slides	Conditions
44 to 48	None	None	Normal
48 to 51	Shoals along the edge	None	Slow Erosion
51 to 60	Some shoals visible	None	Mostly green covered
60 to 66	Some shoals	None	Mostly green covered
66 to 68	None	Two fresh slides – No change since last inspection	Active erosion
68 to 70	Shoals	Small slope failures	Active erosion
70 to 72	None	None	Green covered
72 to 78	Some shoals visible	Small slope failures	Mostly active erosion
78 to 81	Shoals	Small slope failures	Active erosion
81 to 84	None	None	Stable (Green and Gravel beach)
84 to 85	None	Fresh slides – not new	Rapid water
85 to 88	None	None	Stable (Green and Gravel beach)
88 to 90	None	Two fresh slides	Some active erosion
90 to 92	Shoals	None	Gravel beach banks – stable
92 to 95	Shoals with gravel on top	Steep slopes with no green	Active erosion

North Bank – From 95 km to 43 km

Kilometer	Sedimentation/Shoals	Slopes/Sloughs/Slides	Conditions
95 to 84	Shoals – sometimes with gravel on top	None	Stable –gravel and green edges
84 to 80	Few shoals	None – few steep areas	Active erosion – with wet areas in the slopes
80 to 76	Few shoals	None	Active erosion
76 to 70	None	None	Stable
70 to 60	None	None	Stable
60 to 58	Sedimentation	Steep slopes – no green	Active erosion
58 to 52	Sedimentation	None	Stable –all green
52 to 49	Sedimentation	None	Stable –all green
49 to 46	None	Many steep empty slopes	Mostly active erosion
46 to 43	Sedimentation	None	Stable



Figure 1: Between 67 to 68 Km, South Bank



Figure 2: Edwards Island being cleared

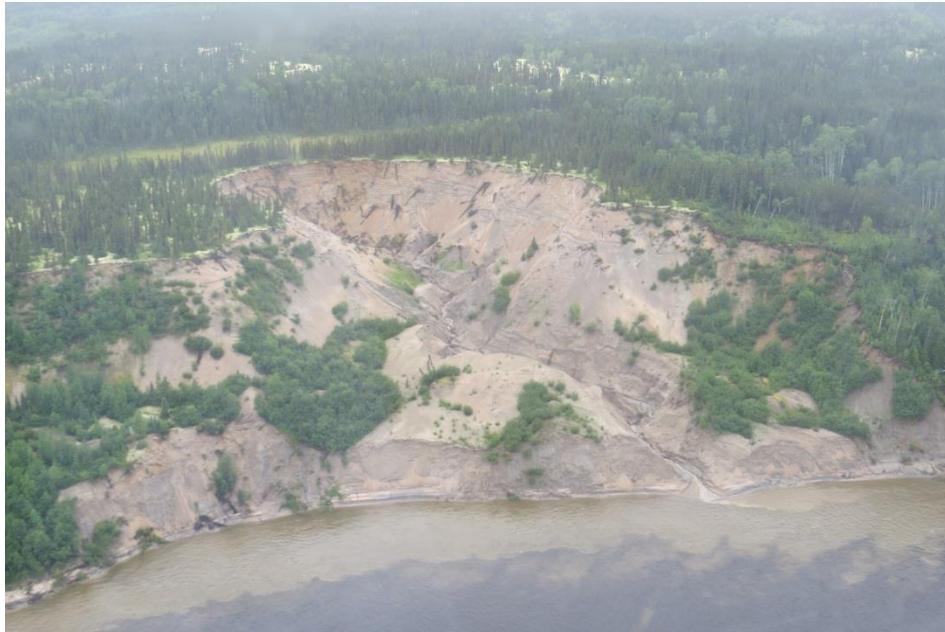


Figure 3: At approx. 49 km, North Bank (Groundwater flow with Sedimentation in the river)

For more pictures please check the link below:

T:\Site Construction\6.0 Monitoring\Reservoir Survey\1-Aug-2017